



When Style, Strength and Value Matters

2.0 Series. Next Generation. Next Level.



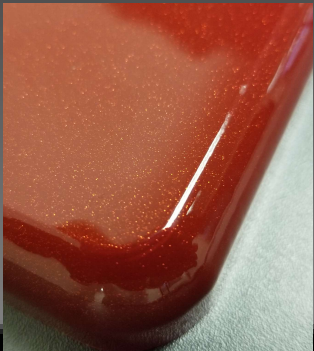
When you want to stand-out from the crowd - Uti-MATE Garage 2.0 Series Cabinets. Contemporary USA design, strength and value to take your home or business project to the next level.





Consumers Digest Back-to-Back
“Best Buy” Awarded Brand

White | Silver | Red | Gray | Black



Industry Unique Five (5) Metallic Color Facing Options

Next Generation. Next Level.



Product Features

- Five (5) Unique Metallic Color Facing Options
- Strong $\frac{3}{4}$ -inch Cabinet Construction in Grey
- Custom Shop Full Radius Profile
- Industrial Strength 1-Inch Thick Shelves
- Full Extension Ball Bearing Drawer Glides
- Soft-Close Fully Adjustable European Hinges
- Jumbo 0.75-Inch Brushed Chrome Pulls
- Infinite Single or Multi-Wall Design Options
- Three (3) Mounting Options*
- Lock Secures Items
- Wire Management Provides Easy Access to Outlets
- 2x Consumers Digest Awarded "Best Buy"
- Leading Brand Since 2005



Core of Design

2-DOOR MEDIUM BASE CABINET

2-Door Base Cabinet UG21002B

FEATURES:

- Strong 3/4" MDF Facing in Midnight Black Metallic
 - Strong 3/4" MDF & PB Cabinet w/Peppercorn Grey Textured PVC Laminate
 - Custom Shop Full Radius Profile
 - Industrial Strength 1" Thick Wrapped Adjustable Shelf (1)
 - Industry Unique Integrated 1" Thick MDF Recessed Worktop
 - Jumbo 3/4" Thick Brushed Chrome Pulls
 - Designer 6" Adjustable Feet Keep Cabinets From Ground Moisture and Level
 - Wall Mounting Cleat Included*
 - Lock Keeps Items Secure
 - Soft Close Hinges for Quiet and Smooth Operation
 - Wire Management System for Easy Cord Access to Outlets
 - Infinite Design and Expandable Options through Modular Design
 - CARB (California Air Resources Board) Approved to Help Environment
 - Color: Midnight Black Metallic and Peppercorn Grey
 - Dimensions: 23.6" W x 21" D x 35" H
- * Consult local cabinet professional on wall mounting & reduce weight for added safety.



2-Door Base Cabinet UG21002G

FEATURES:

- Strong 3/4" MDF Facing in Graphite Grey Metallic
 - Strong 3/4" MDF & PB Cabinet w/Peppercorn Grey Textured PVC Laminate
 - Custom Shop Full Radius Profile
 - Industrial Strength 1" Thick Wrapped Adjustable Shelf (1)
 - Industry Unique Integrated 1" Thick MDF Recessed Worktop
 - Jumbo 3/4" Thick Brushed Chrome Pulls
 - Designer 6" Adjustable Feet Keep Cabinets From Ground Moisture and Level
 - Wall Mounting Cleat Included*
 - Lock Keeps Items Secure
 - Soft Close Hinges for Quiet and Smooth Operation
 - Wire Management System for Easy Cord Access to Outlets
 - Infinite Design and Expandable Options through Modular Design
 - CARB (California Air Resources Board) Approved to Help Environment
 - Color: Graphite Grey Metallic and Peppercorn Grey
 - Dimensions: 23.6" W x 21" D x 35" H
- * Consult local cabinet professional on wall mounting & reduce weight for added safety.



2-Door Base Cabinet UG21002R

FEATURES:

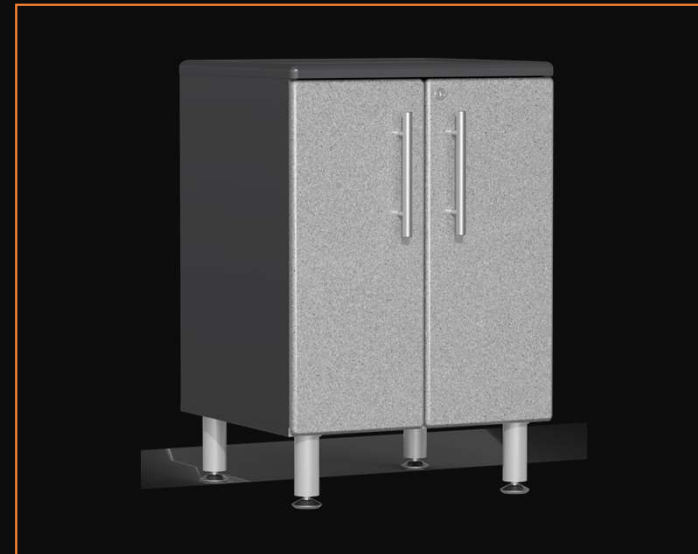
- Strong 3/4" MDF Facing in Ruby Red Metallic
 - Strong 3/4" MDF & PB Cabinet w/Peppercorn Grey Textured PVC Laminate
 - Custom Shop Full Radius Profile
 - Industrial Strength 1" Thick Wrapped Adjustable Shelf (1)
 - Industry Unique Integrated 1" Thick MDF Recessed Worktop
 - Jumbo 3/4" Thick Brushed Chrome Pulls
 - Designer 6" Adjustable Feet Keep Cabinets From Ground Moisture and Level
 - Wall Mounting Cleat Included*
 - Lock Keeps Items Secure
 - Soft Close Hinges for Quiet and Smooth Operation
 - Wire Management System for Easy Cord Access to Outlets
 - Infinite Design and Expandable Options through Modular Design
 - CARB (California Air Resources Board) Approved to Help Environment
 - Color: Ruby Red Metallic and Peppercorn Grey
 - Dimensions: 23.6" W x 21" D x 35" H
- * Consult local cabinet professional on wall mounting & reduce weight for added safety.



2-Door Base Cabinet UG21002S

FEATURES:

- Strong 3/4" MDF Facing in Stardust Silver Metallic
 - Strong 3/4" MDF & PB Cabinet w/Peppercorn Grey Textured PVC Laminate
 - Custom Shop Full Radius Profile
 - Industrial Strength 1" Thick Wrapped Adjustable Shelf (1)
 - Industry Unique Integrated 1" Thick MDF Recessed Worktop
 - Jumbo 3/4" Thick Brushed Chrome Pulls
 - Designer 6" Adjustable Feet Keep Cabinets From Ground Moisture and Level
 - Wall Mounting Cleat Included*
 - Lock Keeps Items Secure
 - Soft Close Hinges for Quiet and Smooth Operation
 - Wire Management System for Easy Cord Access to Outlets
 - Infinite Design and Expandable Options through Modular Design
 - CARB (California Air Resources Board) Approved to Help Environment
 - Color: Stardust Silver Metallic and Peppercorn Grey
 - Dimensions: 23.6" W x 21" D x 35" H
- * Consult local cabinet professional on wall mounting & reduce weight for added safety.



2-Door Base Cabinet UG21002W

FEATURES:

- Strong 3/4" MDF Facing in Starfire White Metallic
 - Strong 3/4" MDF & PB Cabinet w/Peppercorn Grey Textured PVC Laminate
 - Custom Shop Full Radius Profile
 - Industrial Strength 1" Thick Wrapped Adjustable Shelf (1)
 - Industry Unique Integrated 1" Thick MDF Recessed Worktop
 - Jumbo 3/4" Thick Brushed Chrome Pulls
 - Designer 6" Adjustable Feet Keep Cabinets From Ground Moisture and Level
 - Wall Mounting Cleat Included*
 - Lock Keeps Items Secure
 - Soft Close Hinges for Quiet and Smooth Operation
 - Wire Management System for Easy Cord Access to Outlets
 - Infinite Design and Expandable Options through Modular Design
 - CARB (California Air Resources Board) Approved to Help Environment
 - Color: Starfire White Metallic and Peppercorn Grey
 - Dimensions: 23.6" W x 21" D x 35" H
- * Consult local cabinet professional on wall mounting & reduce weight for added safety.



Core of Design

4-DRAWER MEDIUM BASE CABINET

4-Drawer Base Cabinet UG21004B

FEATURES:

- Strong 3/4" MDF Facing in Midnight Black Metallic
 - Strong 3/4" MDF & PB Cabinet w/Peppercorn Grey Textured PVC Laminate
 - Custom Shop Full Radius Profile
 - Industry Unique Integrated 1" Thick MDF Recessed Worktop
 - Jumbo 3/4" Thick Brushed Chrome Pulls
 - Designer 6" Adjustable Feet Keep Cabinets From Ground Moisture and Level
 - Wall Mounting Cleat Included*
 - Lock Keeps Items Secure
 - Smooth Operating Full Extension Ball Bearing Drawer Glides
 - Infinite Design and Expandable Options through Modular Design
 - CARB (California Air Resources Board) Approved to Help Environment
 - Color: Midnight Black Metallic and Peppercorn Grey
 - Dimensions: 23.6" W x 21" D x 35" H
- * Consult local cabinet professional on wall mounting & reduce weight for added safety.



4-Drawer Base Cabinet UG21004G

FEATURES:

- Strong 3/4" MDF Facing in Graphite Grey Metallic
 - Strong 3/4" MDF & PB Cabinet w/Peppercorn Grey Textured PVC Laminate
 - Custom Shop Full Radius Profile
 - Industry Unique Integrated 1" Thick MDF Recessed Worktop
 - Jumbo 3/4" Thick Brushed Chrome Pulls
 - Designer 6" Adjustable Feet Keep Cabinets From Ground Moisture and Level
 - Wall Mounting Cleat Included*
 - Lock Keeps Items Secure
 - Smooth Operating Full Extension Ball Bearing Drawer Glides
 - Infinite Design and Expandable Options through Modular Design
 - CARB (California Air Resources Board) Approved to Help Environment
 - Color: Graphite Grey Metallic and Peppercorn Grey
 - Dimensions: 23.6" W x 21" D x 35" H
- * Consult local cabinet professional on wall mounting & reduce weight for added safety.



4-Drawer Base Cabinet UG21004R

FEATURES:

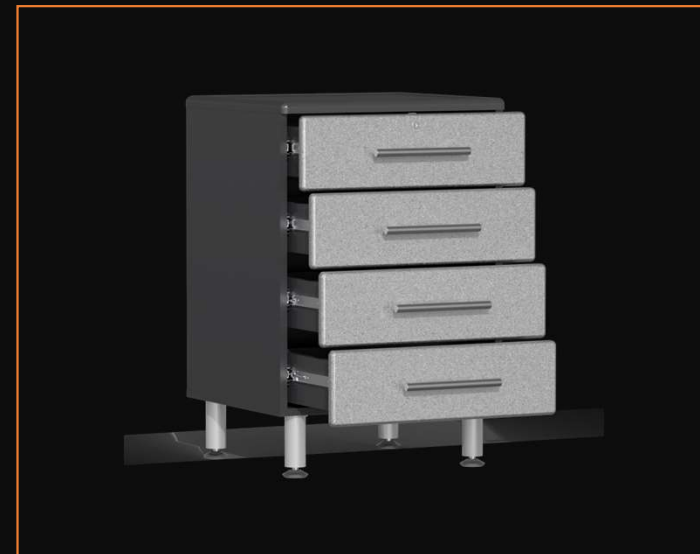
- Strong 3/4" MDF Facing in Ruby Red Metallic
 - Strong 3/4" MDF & PB Cabinet w/Peppercorn Grey Textured PVC Laminate
 - Custom Shop Full Radius Profile
 - Industry Unique Integrated 1" Thick MDF Recessed Worktop
 - Jumbo 3/4" Thick Brushed Chrome Pulls
 - Designer 6" Adjustable Feet Keep Cabinets From Ground Moisture and Level
 - Wall Mounting Cleat Included*
 - Lock Keeps Items Secure
 - Smooth Operating Full Extension Ball Bearing Drawer Glides
 - Infinite Design and Expandable Options through Modular Design
 - CARB (California Air Resources Board) Approved to Help Environment
 - Color: Ruby Red Metallic and Peppercorn Grey
 - Dimensions: 23.6" W x 21" D x 35" H
- * Consult local cabinet professional on wall mounting & reduce weight for added safety.



4-Drawer Base Cabinet UG21004S

FEATURES:

- Strong 3/4" MDF Facing in Stardust Silver Metallic
 - Strong 3/4" MDF & PB Cabinet w/Peppercorn Grey Textured PVC Laminate
 - Custom Shop Full Radius Profile
 - Industry Unique Integrated 1" Thick MDF Recessed Worktop
 - Jumbo 3/4" Thick Brushed Chrome Pulls
 - Designer 6" Adjustable Feet Keep Cabinets From Ground Moisture and Level
 - Wall Mounting Cleat Included*
 - Lock Keeps Items Secure
 - Smooth Operating Full Extension Ball Bearing Drawer Glides
 - Infinite Design and Expandable Options through Modular Design
 - CARB (California Air Resources Board) Approved to Help Environment
 - Color: Stardust Silver Metallic and Peppercorn Grey
 - Dimensions: 23.6" W x 21" D x 35" H
- * Consult local cabinet professional on wall mounting & reduce weight for added safety.



4-Drawer Base Cabinet UG21004W

FEATURES:

- Strong 3/4" MDF Facing in Starfire White Metallic
 - Strong 3/4" MDF & PB Cabinet w/Peppercorn Grey Textured PVC Laminate
 - Custom Shop Full Radius Profile
 - Industry Unique Integrated 1" Thick MDF Recessed Worktop
 - Jumbo 3/4" Thick Brushed Chrome Pulls
 - Designer 6" Adjustable Feet Keep Cabinets From Ground Moisture and Level
 - Wall Mounting Cleat Included*
 - Lock Keeps Items Secure
 - Smooth Operating Full Extension Ball Bearing Drawer Glides
 - Infinite Design and Expandable Options through Modular Design
 - CARB (California Air Resources Board) Approved to Help Environment
 - Color: Starfire White Metallic and Peppercorn Grey
 - Dimensions: 23.6" W x 21" D x 35" H
- * Consult local cabinet professional on wall mounting & reduce weight for added safety.



Core of Design

2-DOOR OVERSIZED TALL CABINET

2-Door Tall Cabinet UG21006B

FEATURES:

- Strong 3/4" MDF Facing in Midnight Black Metallic
 - Strong 3/4" MDF & PB Cabinet w/Peppercorn Grey Textured PVC Laminate
 - Custom Shop Full Radius Profile
 - Three (3) 1" Thick Shelves (1-Fixed & 2-Adjustable)
 - Jumbo 3/4" Thick Brushed Chrome Pulls
 - Designer 6" Adjustable Feet Keep Cabinets From Ground Moisture and Level
 - Lock Keeps Items Secure
 - Soft Close Hinges for Quiet and Smooth Operation
 - Wire Management System for Easy Cord Access to Outlets
 - Infinite Design Options through Modular Design
 - CARB (California Air Resources Board) Approved to Help Environment
 - Color: Midnight Black Metallic and Peppercorn Grey
 - Dimensions: 35.5" W x 21" D x 80" H
- * Consult local cabinet professional on wall mounting & reduce weight for added safety.



2-Door Tall Cabinet UG21006G

FEATURES:

- Strong 3/4" MDF Facing in Graphite Grey Metallic
 - Strong 3/4" MDF & PB Cabinet w/Peppercorn Grey Textured PVC Laminate
 - Custom Shop Full Radius Profile
 - Three (3) 1" Thick Shelves (1-Fixed & 2-Adjustable)
 - Jumbo 3/4" Thick Brushed Chrome Pulls
 - Designer 6" Adjustable Feet Keep Cabinets From Ground Moisture and Level
 - Lock Keeps Items Secure
 - Soft Close Hinges for Quiet and Smooth Operation
 - Wire Management System for Easy Cord Access to Outlets
 - Infinite Design Options through Modular Design
 - CARB (California Air Resources Board) Approved to Help Environment
 - Color: Graphite Grey Metallic and Peppercorn Grey
 - Dimensions: 35.5" W x 21" D x 80" H
- * Consult local cabinet professional on wall mounting & reduce weight for added safety.



2-Door Tall Cabinet UG21006R

FEATURES:

- Strong 3/4" MDF Facing in Ruby Red Metallic
 - Strong 3/4" MDF & PB Cabinet w/Peppercorn Grey Textured PVC Laminate
 - Custom Shop Full Radius Profile
 - Three (3) 1" Thick Shelves (1-Fixed & 2-Adjustable)
 - Jumbo 3/4" Thick Brushed Chrome Pulls
 - Designer 6" Adjustable Feet Keep Cabinets From Ground Moisture and Level
 - Lock Keeps Items Secure
 - Soft Close Hinges for Quiet and Smooth Operation
 - Wire Management System for Easy Cord Access to Outlets
 - Infinite Design Options through Modular Design
 - CARB (California Air Resources Board) Approved to Help Environment
 - Color: Ruby Red Metallic and Peppercorn Grey
 - Dimensions: 35.5" W x 21" D x 80" H
- * Consult local cabinet professional on wall mounting & reduce weight for added safety.



2-Door Tall Cabinet UG21006S

FEATURES:

- Strong 3/4" MDF Facing in Stardust Silver Metallic
 - Strong 3/4" MDF & PB Cabinet w/Peppercorn Grey Textured PVC Laminate
 - Custom Shop Full Radius Profile
 - Three (3) 1" Thick Shelves (1-Fixed & 2-Adjustable)
 - Jumbo 3/4" Thick Brushed Chrome Pulls
 - Designer 6" Adjustable Feet Keep Cabinets From Ground Moisture and Level
 - Lock Keeps Items Secure
 - Soft Close Hinges for Quiet and Smooth Operation
 - Wire Management System for Easy Cord Access to Outlets
 - Infinite Design Options through Modular Design
 - CARB (California Air Resources Board) Approved to Help Environment
 - Color: Stardust Silver Metallic and Peppercorn Grey
 - Dimensions: 35.5" W x 21" D x 80" H
- * Consult local cabinet professional on wall mounting & reduce weight for added safety.



2-Door Tall Cabinet UG21006W

FEATURES:

- Strong 3/4" MDF Facing in Starfire White Metallic
 - Strong 3/4" MDF & PB Cabinet w/Peppercorn Grey Textured PVC Laminate
 - Custom Shop Full Radius Profile
 - Three (3) 1" Thick Shelves (1-Fixed & 2-Adjustable)
 - Jumbo 3/4" Thick Brushed Chrome Pulls
 - Designer 6" Adjustable Feet Keep Cabinets From Ground Moisture and Level
 - Lock Keeps Items Secure
 - Soft Close Hinges for Quiet and Smooth Operation
 - Wire Management System for Easy Cord Access to Outlets
 - Infinite Design Options through Modular Design
 - CARB (California Air Resources Board) Approved to Help Environment
 - Color: Starfire White Metallic and Peppercorn Grey
 - Dimensions: 35.5" W x 21" D x 80" H
- * Consult local cabinet professional on wall mounting & reduce weight for added safety.



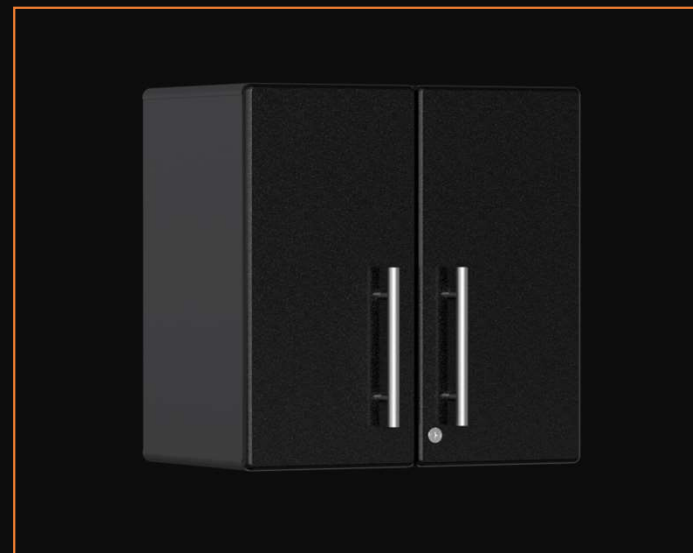
Core of Design

2-DOOR MEDIUM WALL CABINET

2-Door Wall Cabinet UG21009B/UG21309B

FEATURES:

- Strong 3/4" MDF Facing in Midnight Black Metallic
 - Strong 3/4" MDF & PB Cabinet w/Peppercorn Grey Textured PVC Laminate
 - Custom Shop Full Radius Profile
 - Industrial Strength 1" Thick Wrapped Adjustable Shelf (1)
 - Jumbo 3/4" Thick Brushed Chrome Pulls
 - Wall Mounting Cleat Included*
 - Lock Keeps Items Secure
 - Soft Close Hinges for Quiet and Smooth Operation
 - Infinite Design Options through Modular Design
 - CARB (California Air Resources Board) Approved to Help Environment
 - Color: Midnight Black Metallic and Peppercorn Grey
 - 10-Year Limited Manufacturer Parts Warranty
 - Dimensions: 23.6" W x 14" D x 23.6" H
- * Consult local cabinet professional on wall mounting & reduce weight for added safety.



2-Door Wall Cabinet UG21009G/UG21309G

FEATURES:

- Strong 3/4" MDF Facing in Graphite Grey Metallic
 - Strong 3/4" MDF & PB Cabinet w/Peppercorn Grey Textured PVC Laminate
 - Custom Shop Full Radius Profile
 - Industrial Strength 1" Thick Wrapped Adjustable Shelf (1)
 - Jumbo 3/4" Thick Brushed Chrome Pulls
 - Wall Mounting Cleat Included*
 - Lock Keeps Items Secure
 - Soft Close Hinges for Quiet and Smooth Operation
 - Infinite Design Options through Modular Design
 - CARB (California Air Resources Board) Approved to Help Environment
 - Color: Graphite Grey Metallic and Peppercorn Grey
 - Dimensions: 23.6" W x 14" D x 23.6" H
- * Consult local cabinet professional on wall mounting & reduce weight for added safety.



2-Door Wall Cabinet UG21009R /UG21309R

FEATURES:

- Strong 3/4" MDF Facing in Ruby Red Metallic
 - Strong 3/4" MDF & PB Cabinet w/Peppercorn Grey Textured PVC Laminate
 - Custom Shop Full Radius Profile
 - Industrial Strength 1" Thick Wrapped Adjustable Shelf (1)
 - Jumbo 3/4" Thick Brushed Chrome Pulls
 - Wall Mounting Cleat Included*
 - Lock Keeps Items Secure
 - Soft Close Hinges for Quiet and Smooth Operation
 - Infinite Design Options through Modular Design
 - CARB (California Air Resources Board) Approved to Help Environment
 - Color: Ruby Red Metallic and Peppercorn Grey
 - 10-Year Limited Manufacturer Parts Warranty
 - Dimensions: 23.6" W x 14" D x 23.6" H
- * Consult local cabinet professional on wall mounting & reduce weight for added safety.



2-Door Wall Cabinet UG21009S/UG21309S

FEATURES:

- Strong 3/4" MDF Facing in Stardust Silver Metallic
 - Strong 3/4" MDF & PB Cabinet w/Peppercorn Grey Textured PVC Laminate
 - Custom Shop Full Radius Profile
 - Industrial Strength 1" Thick Wrapped Adjustable Shelf (1)
 - Jumbo 3/4" Thick Brushed Chrome Pulls
 - Wall Mounting Cleat Included*
 - Lock Keeps Items Secure
 - Soft Close Hinges for Quiet and Smooth Operation
 - Infinite Design Options through Modular Design
 - CARB (California Air Resources Board) Approved to Help Environment
 - Color: Stardust Silver Metallic and Peppercorn Grey
 - Dimensions: 23.6" W x 14" D x 23.6" H
- * Consult local cabinet professional on wall mounting & reduce weight for added safety.



2-Door Wall Cabinet UG21009W/UG21309W

FEATURES:

- Strong 3/4" MDF Facing in Starfire White Metallic
 - Strong 3/4" MDF & PB Cabinet w/Peppercorn Grey Textured PVC Laminate
 - Custom Shop Full Radius Profile
 - Industrial Strength 1" Thick Wrapped Adjustable Shelf (1)
 - Jumbo 3/4" Thick Brushed Chrome Pulls
 - Wall Mounting Cleat Included*
 - Lock Keeps Items Secure
 - Soft Close Hinges for Quiet and Smooth Operation
 - Infinite Design Options through Modular Design
 - CARB (California Air Resources Board) Approved to Help Environment
 - Color: Starfire White Metallic and Peppercorn Grey
 - Dimensions: 23.6" W x 14" D x 23.6" H
- * Consult local cabinet professional on wall mounting & reduce weight for added safety.



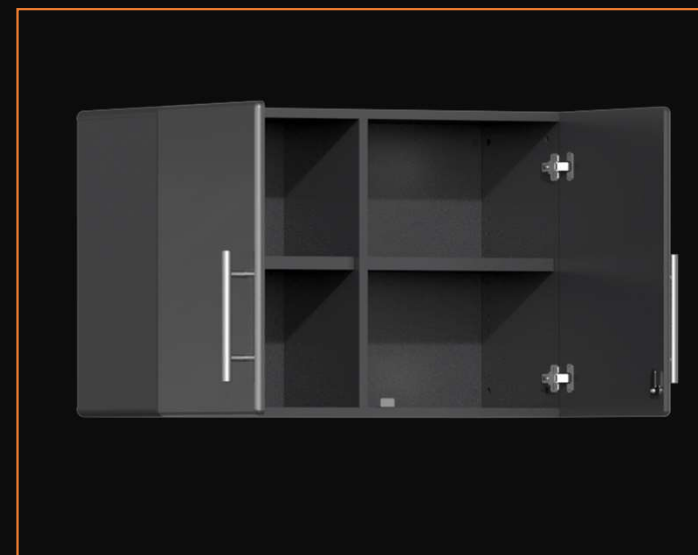
Core of Design

2-DOOR OVERSIZED WALL CABINET

2-Door Partitioned Oversized Wall Cabinet UG21008G

FEATURES:

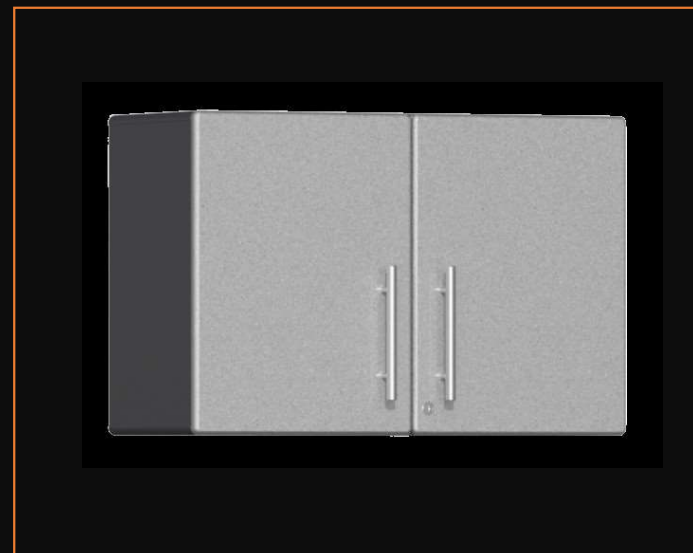
- Strong 3/4" MDF Facing in Graphite Grey Metallic
 - Strong 3/4" MDF & PB Cabinet w/Peppercorn Grey Textured PVC Laminate
 - Center Partition
 - Custom Shop Full Radius Profile
 - Industrial Strength 1" Thick Wrapped Adjustable Shelf (1)
 - Jumbo 3/4" Thick Brushed Chrome Pulls
 - Wall Mounting Cleat Included*
 - Lock Keeps Items Secure
 - Soft Close Hinges for Quiet and Smooth Operation
 - Infinite Design Options through Modular Design
 - CARB (California Air Resources Board) Approved to Help Environment
 - Color: Graphite Grey Metallic and Peppercorn Grey
 - Dimensions: 35.5" W x 14" D x 23.6" H
- * Consult local cabinet professional on wall mounting & reduce weight for added safety.



2-Door Partitioned Oversized Wall Cabinet UG21008S

FEATURES:

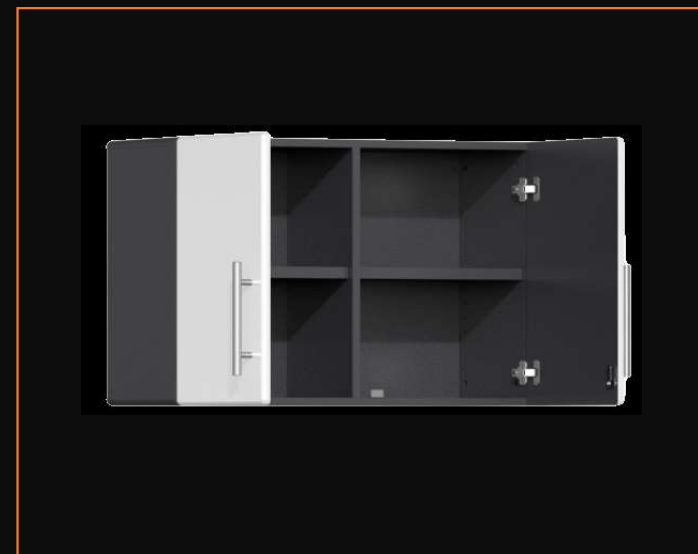
- Strong 3/4" MDF Facing in Graphite Grey Metallic
 - Strong 3/4" MDF & PB Cabinet w/Peppercorn Grey Textured PVC Laminate
 - Center Partition
 - Custom Shop Full Radius Profile
 - Industrial Strength 1" Thick Wrapped Adjustable Shelf (1)
 - Jumbo 3/4" Thick Brushed Chrome Pulls
 - Wall Mounting Cleat Included*
 - Lock Keeps Items Secure
 - Soft Close Hinges for Quiet and Smooth Operation
 - Infinite Design Options through Modular Design
 - CARB (California Air Resources Board) Approved to Help Environment
 - Color: Stardust Silver Metallic and Peppercorn Grey
 - Dimensions: 35.5" W x 14" D x 23.6" H
- * Consult local cabinet professional on wall mounting & reduce weight for added safety.



2-Door Partitioned Oversized Wall Cabinet UG21008W


FEATURES:

- Strong 3/4" MDF Facing in Graphite Grey Metallic
 - Strong 3/4" MDF & PB Cabinet w/Peppercorn Grey Textured PVC Laminate
 - Center Partition
 - Custom Shop Full Radius Profile
 - Industrial Strength 1" Thick Wrapped Adjustable Shelf (1)
 - Jumbo 3/4" Thick Brushed Chrome Pulls
 - Wall Mounting Cleat Included*
 - Lock Keeps Items Secure
 - Soft Close Hinges for Quiet and Smooth Operation
 - Infinite Design Options through Modular Design
 - CARB (California Air Resources Board) Approved to Help Environment
 - Color: Starfire White Metallic and Peppercorn Grey
 - Dimensions: 35.5" W x 14" D x 23.6" H
- * Consult local cabinet professional on wall mounting & reduce weight for added safety.



Core of Design


WORKTOPS



Recessed 6-Ft Worktop Surface UG21010

FEATURES:

- Strong 1.5" Thick MDF
- Unique Channeled Surface Keeps Items from Rolling Off
- Dual Position Options of Channeled Area (near or away)
- Textured PVC Laminate
- 1.5" Thick Solid Bamboo Worktop
- Custom Shop Full Radius Profile
- Industrial Strength 300 lb Weight Load
- CARB Approved Eco-Friendly Product to Help Improve Environment
- Color: Grey
- Dimensions: 70.9" W x 21" D x 1.5" H



Bamboo 6-Ft Worktop Surface GA-10BB

FEATURES:

- Strong 1.5" Thick Solid Bamboo Worktop
- Custom Shop Full Radius Profile
- Industrial Strength 300 lb Weight Load
- Eco-Friendly Product to Help Improve Environment
- Color: Bamboo | Tan
- Dimensions: 70.9" W x 21" D x 1.5" H

Core of Design

CABINET ACCESSORIES



2-Piece Shelf Kit – For Use Only In Model #'s UG21001 and UG21006

FEATURES:

- For Use In Only Model # UG21001 & UG21006
- Strong 1" Thick Shelves (2)
- Shelf Supports Included
- Industrial Strength Weight Load
- CARB Approved Eco-Friendly Product to Help Improve Environment
- Color: Grey
- Dimensions: 33.8" W x 18.5" D x 1" H



Core of Design

CABINET PACKAGES

* AVAILABLE IN ALL 5-COLORS *

2-Piece Tall Cabinet Set UG22620

FEATURES:

- Strong $\frac{3}{4}$ " MDF & PB Cabinet Construction w/Textured Grey PVC Laminate
- Strong $\frac{3}{4}$ " MDF Facings with PVC Gloss Metallic Color
- Industrial Strength 1-inch Thick Shelves
- Jumbo 0.75-inch Brushed Chrome Pulls
- Custom Shop Style Full Radius Profile
- Lock secures Items
- Designer Style 6-inch Feet Keep Cabinets Away from Moisture
- Color: Available in Five (5) Colors
- Dimensions: 70.8" W x 21" D x 80" H



3-Piece Tall Cabinet Set UG22630

FEATURES:

- Strong $\frac{3}{4}$ " MDF and PB Cabinet Construction w/Textured Grey PVC Laminate
- Strong $\frac{3}{4}$ " MDF Facings with PVC Gloss Metallic Color
- Industrial Strength 1-inch Thick Shelves
- Jumbo 0.75-inch Brushed Chrome Pulls
- Custom Shop Style Full Radius Profile
- Lock secures Items
- Designer Style 6-inch Feet Keep Cabinets Away from Moisture
- Color: Available in Five (5) Colors
- Dimensions: 106.20" W x 21" D x 80" H



4-Piece Tall Cabinet Set UG22640

FEATURES:

- Strong $\frac{3}{4}$ " MDF and PB Cabinet Construction w/Textured Grey PVC Laminate
- Strong $\frac{3}{4}$ " MDF Facings with PVC Gloss Metallic Color
- Industrial Strength 1-inch Thick Shelves
- Jumbo 0.75-inch Brushed Chrome Pulls
- Custom Shop Style Full Radius Profile
- Lock secures Items
- Designer Style 6-inch Feet Keep Cabinets Away from Moisture
- Color: Available in Five (5) Colors\
- Dimensions: 141.60" W x 21" D x 80" H



5-Piece Tall Cabinet Set UG22650

FEATURES:

- Strong $\frac{3}{4}$ " MDF and PB Cabinet Construction w/Textured Grey PVC Laminate
- Strong $\frac{3}{4}$ " MDF Facings with PVC Gloss Metallic Color
- Industrial Strength 1-inch Thick Shelves
- Jumbo 0.75-inch Brushed Chrome Pulls
- Custom Shop Style Full Radius Profile
- Lock secures Items
- Designer Style 6-inch Feet Keep Cabinets Away from Moisture
- Color: Available in Five (5) Colors
- Dimensions: 177" W x 21" D x 80" H



4-Piece Wall Set UG22040

FEATURES:

- Strong $\frac{3}{4}$ " MDF and PB Cabinet Construction w/Textured Grey PVC Laminate
- Strong $\frac{3}{4}$ " MDF Facings with PVC Gloss Metallic Color
- Industrial Strength 1-inch Thick Shelves
- Jumbo 0.75-inch Brushed Chrome Pulls
- Custom Shop Style Full Radius Profile
- Lock secures Items
- Inverted Wall Cleat for Flush Mounting
- Color: Available in Five (5) Colors\
- Dimensions: 94.40" W x 14" D x 23.6" H



4-Piece w/Bamboo Worktop UG23042

FEATURES:

- Strong ¾" MDF and PB Cabinet Construction w/Textured Grey PVC Laminate
- Strong ¾" MDF Facings with PVC Gloss Metallic Color
- Industrial Strength 1-inch Thick Shelves
- Full Extension Drawer Glides
- Jumbo 0.75-inch Brushed Chrome Pulls
- Custom Shop Style Full Radius Profile
- Lock secures Items
- Designer Style 6-inch Feet Keep Cabinets Away from Moisture
- Color: Available in Five (5) Colors
- Dimensions: 70.9" W x 21" D x 36.5" H



5-Piece Starter Set UG22050

FEATURES:

- Strong ¾" MDF and PB Cabinet Construction w/Textured Grey PVC Laminate
- Strong ¾" MDF Facings with PVC Gloss Metallic Color
- Industrial Strength 1-inch Thick Shelves
- ⇒ Full Extension Drawer Glides
- ⇒ Jumbo 0.75-inch Brushed Chrome Pulls
- Custom Shop Style Full Radius Profile
- Lock secures Items
- Designer Style 6-inch Feet Keep Cabinets Away from Moisture
- Color: Available in Five (5) Colors
- Dimensions: 82.70" W x 21" D x 80" H





5-Piece with Workstation UG22051

FEATURES:

- Strong $\frac{3}{4}$ " MDF and PB Cabinet Construction w/Textured Grey PVC Laminate
- Strong $\frac{3}{4}$ " MDF Facings with PVC Gloss Metallic Color
- Industrial Strength 1-inch Thick Shelves
- Full Extension Drawer Glides
- Jumbo 0.75-inch Brushed Chrome Pulls
- Custom Shop Style Full Radius Profile
- Lock secures Items
- Designer Style 6-inch Feet Keep Cabinets Away from Moisture
- Color: Available in Five (5) Colors
- Dimensions: 106.50" W x 21" D x 80" H





6-Piece with Workstation UG22061

FEATURES:

- Strong ¾" MDF and PB Cabinet Construction w/Textured Grey PVC Laminate
- Strong ¾" MDF Facings with PVC Gloss Metallic Color
- Industrial Strength 1-inch Thick Shelves
- Full Extension Drawer Glides
- Jumbo 0.75-inch Brushed Chrome Pulls
- Custom Shop Style Full Radius Profile
- Lock secures Items
- Designer Style 6-inch Feet Keep Cabinets Away from Moisture
- Color: Available in Five (5) Colors
- Dimensions: 106.50" W x 21" D x 80" H





7-Piece w/Bamboo Worktop UG22072

FEATURES:

- Strong ¾" MDF and PB Cabinet Construction w/Textured Grey PVC Laminate
- Strong ¾" MDF Facings with PVC Gloss Metallic Color
- Industrial Strength 1-inch Thick Shelves
- Full Extension Drawer Glides
- Jumbo 0.75-inch Brushed Chrome Pulls
- Custom Shop Style Full Radius Profile
- Lock secures Items
- Designer Style 6-inch Feet Keep Cabinets Away from Moisture
- Color: Available in Five (5) Colors
- Dimensions: 142" W x 21" D x 80" H



7-Piece w/Bamboo Worktop UG24072

FEATURES:

- Strong $\frac{3}{4}$ " MDF and PB Cabinet Construction w/Textured Grey PVC Laminate
- Strong $\frac{3}{4}$ " MDF Facings with PVC Gloss Metallic Color
- Industrial Strength 1-inch Thick Shelves with 200 lb Load Rating
- Full Extension Drawer Glides
- Jumbo 0.75-inch Brushed Chrome Pulls
- Custom Shop Style Full Radius Profile
- Lock secures Items
- Designer Style 6-inch Feet Keep Cabinets Away from Moisture
- Color: Available in Five (5) Colors
- Dimensions: 142" W x 21" D x 80" H



8-Piece w/Bamboo Worktop UG22082

FEATURES:

- Strong $\frac{3}{4}$ " MDF and PB Cabinet Construction w/Textured Grey PVC Laminate
- Strong $\frac{3}{4}$ " MDF Facings with PVC Gloss Metallic Color
- Industrial Strength 1-inch Thick Shelves
- Full Extension Drawer Glides • Jumbo 0.75-inch Brushed Chrome Pulls
- Custom Shop Style Full Radius Profile
- Lock secures Items
- Designer Style 6-inch Feet Keep Cabinets Away from Moisture
- Color: Available in Five (5) Colors
- Dimensions: 142" W x 21" D x 80" H



8-Piece w/Channeled Worktop UG23081

- Strong $\frac{3}{4}$ " MDF and PB Cabinet Construction w/Textured Grey PVC Laminate
- Strong $\frac{3}{4}$ " MDF Facings with PVC Gloss Metallic Color
- Industrial Strength 1-inch Thick Shelves
- Full Extension Drawer Glides
- Jumbo 0.75-inch Brushed Chrome Pulls
- Custom Shop Style Full Radius Profile
- Lock secures Items
- Designer Style 6-inch Feet Keep Cabinets Away from Moisture
- Color: Available in Five (5) Colors
- Dimensions: 142" W x 21" D x 36.5" H



9-Piece w/Bamboo Worktop UG22092

FEATURES:

- Strong $\frac{3}{4}$ " MDF and PB Cabinet Construction w/Textured Grey PVC Laminate
- Strong $\frac{3}{4}$ " MDF Facings with PVC Gloss Metallic Color
- Industrial Strength 1-inch Thick Shelves
- Full Extension Drawer Glides
- Jumbo 0.75-inch Brushed Chrome Pulls
- Custom Shop Style Full Radius Profile
- Lock secures Items
- Designer Style 6-inch Feet Keep Cabinets Away from Moisture
- Color: Available in Five (5) Colors
- Dimensions: 142" W x 21" D x 80" H



9-Piece w/Bamboo Worktop UG23092

FEATURES:

- Strong $\frac{3}{4}$ " MDF and PB Cabinet Construction w/Textured Grey PVC Laminate
- Strong $\frac{3}{4}$ " MDF Facings with PVC Gloss Metallic Color
- Industrial Strength 1-inch Thick Shelves
- Full Extension Drawer Glides
- Jumbo 0.75-inch Brushed Chrome Pulls
- Custom Shop Style Full Radius Profile
- Lock secures Items
- Designer Style 6-inch Feet Keep Cabinets Away from Moisture
- Color: Available in Five (5) Colors
- Minimum Dimensions: 142" W x 21" D x 80" H



9-Piece w/Bamboo Worktop UG23091

FEATURES:

- Strong $\frac{3}{4}$ " MDF and PB Cabinet Construction w/Textured Grey PVC Laminate
- Strong $\frac{3}{4}$ " MDF Facings with PVC Gloss Metallic Color
- Industrial Strength 1-inch Thick Shelves
- Full Extension Drawer Glides
- Jumbo 0.75-inch Brushed Chrome Pulls
- Custom Shop Style Full Radius Profile
- Lock secures Items
- Designer Style 6-inch Feet Keep Cabinets Away from Moisture
- Color: Available in Five (5) Colors
- Dimensions: 142" W x 21" D x 80" H



10-Piece w/Channeled Worktop UG23101

FEATURES:

- Strong ¾" MDF and PB Cabinet Construction w/Textured Grey PVC Laminate
- Strong ¾" MDF Facings with PVC Gloss Metallic Color
- Industrial Strength 1-inch Thick Shelves
- Full Extension Drawer Glides
- Jumbo 0.75-inch Brushed Chrome Pulls
- Custom Shop Style Full Radius Profile
- Lock secures Items
- Designer Style 6-inch Feet Keep Cabinets Away from Moisture
- Color: Available in Five (5) Colors
- Dimensions: 248.30" W x 21" D x 80" H



10-Piece w/Channeled Worktop UG22101

FEATURES:

- Strong $\frac{3}{4}$ " MDF and PB Cabinet Construction w/Textured Grey PVC Laminate
- Strong $\frac{3}{4}$ " MDF Facings with PVC Gloss Metallic Color
- Industrial Strength 1-inch Thick Shelves
- Full Extension Drawer Glides
- Jumbo 0.75-inch Brushed Chrome Pulls
- Custom Shop Style Full Radius Profile
- Lock secures Items
- Designer Style 6-inch Feet Keep Cabinets Away from Moisture
- Color: Available in Five (5) Colors
- Minimum Dimensions: 213" W x 21" D x 80" H



10-Piece w/Bamboo Worktop UG22102

FEATURES:

- Strong $\frac{3}{4}$ " MDF and PB Cabinet Construction w/Textured Grey PVC Laminate
- Strong $\frac{3}{4}$ " MDF Facings with PVC Gloss Metallic Color
- Industrial Strength 1-inch Thick Shelves
- Full Extension Drawer Glides
- Jumbo 0.75-inch Brushed Chrome Pulls
- Custom Shop Style Full Radius Profile
- Lock secures Items
- Designer Style 6-inch Feet Keep Cabinets Away from Moisture
- Color: Available in Five (5) Colors
- Dimensions: 213" W x 21" D x 80" H



11-Piece w/Bamboo Worktop UG22111

FEATURES:

- Strong $\frac{3}{4}$ " MDF and PB Cabinet Construction w/Textured Grey PVC Laminate
- Strong $\frac{3}{4}$ " MDF Facings with PVC Gloss Metallic Color
- Industrial Strength 1-inch Thick Shelves
- Full Extension Drawer Glides
- Jumbo 0.75-inch Brushed Chrome Pulls
- Custom Shop Style Full Radius Profile
- Lock secures Items
- Designer Style 6-inch Feet Keep Cabinets Away from Moisture
- Color: Available in Five (5) Colors
- Dimensions: 213" W x 21" D x 80" H



11-Piece w/Bamboo Worktop UG22112

FEATURES:

- Strong $\frac{3}{4}$ " MDF and PB Cabinet Construction w/Textured Grey PVC Laminate
- Strong $\frac{3}{4}$ " MDF Facings with PVC Gloss Metallic Color
- Industrial Strength 1-inch Thick Shelves
- Full Extension Drawer Glides
- Jumbo 0.75-inch Brushed Chrome Pulls
- Custom Shop Style Full Radius Profile
- Lock secures Items
- Designer Style 6-inch Feet Keep Cabinets Away from Moisture
- Color: Available in Five (5) Colors
- Dimensions: 213" W x 21" D x 80" H



15-Piece w/Dual Workstations UG22152

FEATURES:

- Strong $\frac{3}{4}$ " MDF and PB Cabinet Construction w/Textured Grey PVC Laminate
- Strong $\frac{3}{4}$ " MDF Facings with PVC Gloss Metallic Color
- Industrial Strength 1-inch Thick Shelves
- Full Extension Drawer Glides
- Jumbo 0.75-inch Brushed Chrome Pulls
- Custom Shop Style Full Radius Profile
- Lock secures Items
- Designer Style 6-inch Feet Keep Cabinets Away from Moisture
- Color: Available in Five (5) Colors
- Dimensions: 248.50" W x 21" D x 80" H



16-Piece w/Workstation
UG22162

FEATURES:

- Strong $\frac{3}{4}$ " MDF and PB Cabinet Construction w/Textured Grey PVC Laminate
- Strong $\frac{3}{4}$ " MDF Facings with PVC Gloss Metallic Color
- Industrial Strength 1-inch Thick Shelves
- Full Extension Drawer Glides
- Jumbo 0.75-inch Brushed Chrome Pulls
- Custom Shop Style Full Radius Profile
- Lock secures Items
- Designer Style 6-inch Feet Keep Cabinets Away from Moisture
- Color: Available in Five (5) Colors
- Dimensions: 284" W x 21" D x 80" H



17-Piece w/Workstation
UG22172

FEATURES:

- Strong ¾" MDF and PB Cabinet Construction w/Textured Grey PVC Laminate
- Strong ¾" MDF Facings with PVC Gloss Metallic Color
- Industrial Strength 1-inch Thick Shelves
- Full Extension Drawer Glides
- Jumbo 0.75-inch Brushed Chrome Pulls
- Custom Shop Style Full Radius Profile
- Lock secures Items
- Designer Style 6-inch Feet Keep Cabinets Away from Moisture
- Color: Available in Five (5) Colors
- Dimensions: 284" W x 21" D x 80" H

